

AVAILABLE FOR LEASE
END CAP RETAIL/OFFICE SPACE
229 Main Street South
Southbury, CT
2,650 SQUARE FEET



PROPERTY INFORMATION:

- ♦ Abundant Parking and Visibility
- ♦ Co-Tenant with Mattress Firm and Wells Fargo Bank
- ♦ Located Near CVS
- ♦ Traffic Count: 20,000 +/- cars per day
- ♦ Conveniently located between exits 14 and 15 of I-84
- ♦ Trade Area Includes Middlebury, Woodbury and Oxford

3 Mile Population: 16,810 **AVG HH Income:** \$106,828 **#Households:** 7,939

5 Mile Population: 36,057 **AVG HH Income:** \$120,557 **#Households:** 14,500

7 Mile Population: 63,690 **AVG HH Income:** \$128,862 **#Households:** 23,929

For more information, please contact:

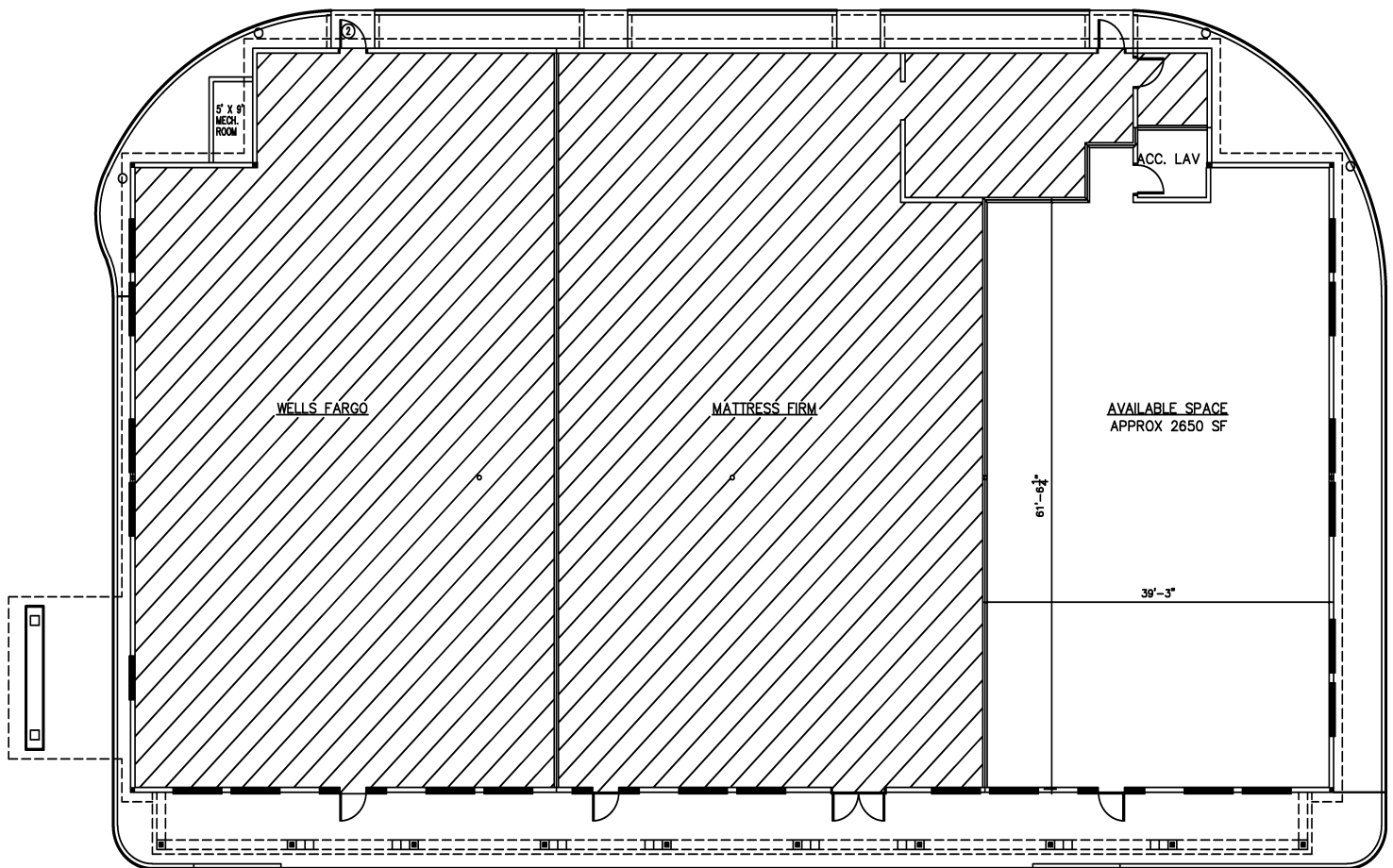
Ralph L. Calabrese rlc@calabreseagency.com

615 West Johnson Ave., Suite 202, Cheshire, CT 06410

R. Calabrese Agency, LLC www.CalabreseAgency.com 203-573-0342

Information provided is purported to be from reliable sources. No representation is made as to the accuracy thereof and it is submitted subject to errors, omissions, changes in price, rental or other conditions, prior sale or withdrawal notice. It is suggested that prospective buyers/tenants should carefully verify each item and exercise due diligence.

AVAILABLE FOR LEASE
END CAP RETAIL/OFFICE SPACE
229 Main Street South
Southbury, CT
2,650 SQUARE FEET



229 Main St South, Southbury, CT



SUBJECT PROPERTY
229 Main Street South
Southbury, CT

CVS
pharmacy

W
Walgreens

TJ-maxx

BIG K

Panera
BREAD®

DUNKIN'
DONUTS

Stop & Shop

McDonald's

Community House Rd

Seymour Rd

84

6

Southbury Green Retail Plaza

J.S. A. BANK
ESTABLISHED 1905

STARBUCKS
COFFEE

GAP

VICTORIA'S
SECRET

STAPLES
The Office Superstore

Pier 1 imports

CHICO'S
www.chicos.com

ShopRite

DUNKIN'
DONUTS

Google earth

© 2015 Google

Imagery Date: 9/27/2014 41°28'06.30" N 73°13'18.32" W elev 269 ft eye alt 11277 ft